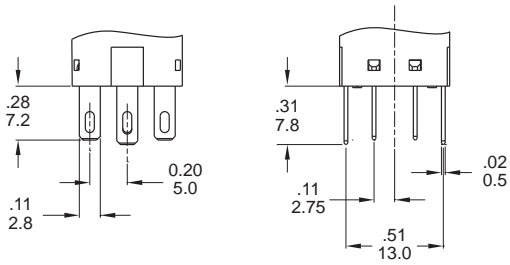


MPB19 Series

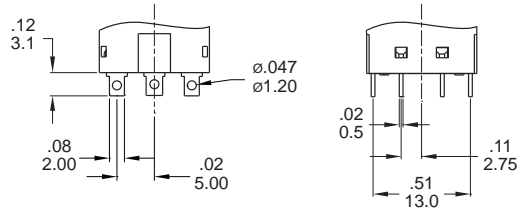
19mm Metal Pushbutton Switches

TERMINAL TYPE

J Solder terminal (std)

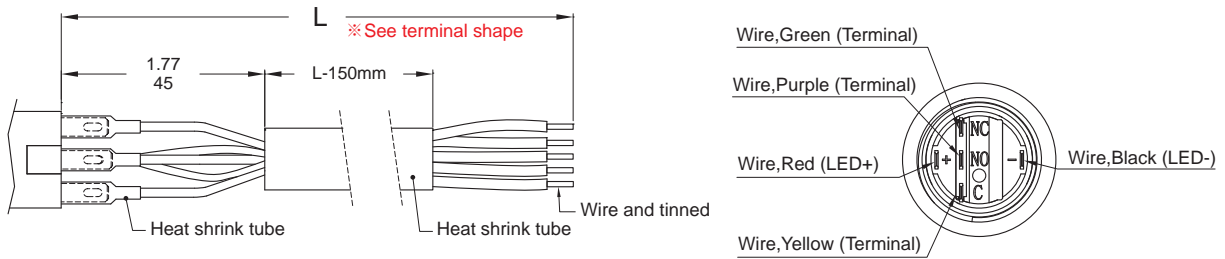


S2 Short solder terminal



Wire (Flying lead Terminals)

※ Wire=UL 3385,18AWG,300V(Black/Yellow/Green/Red/Purple)

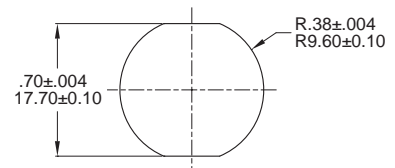
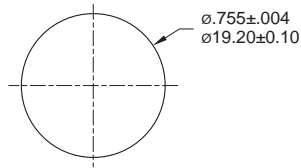


O/R/D/E Light Type

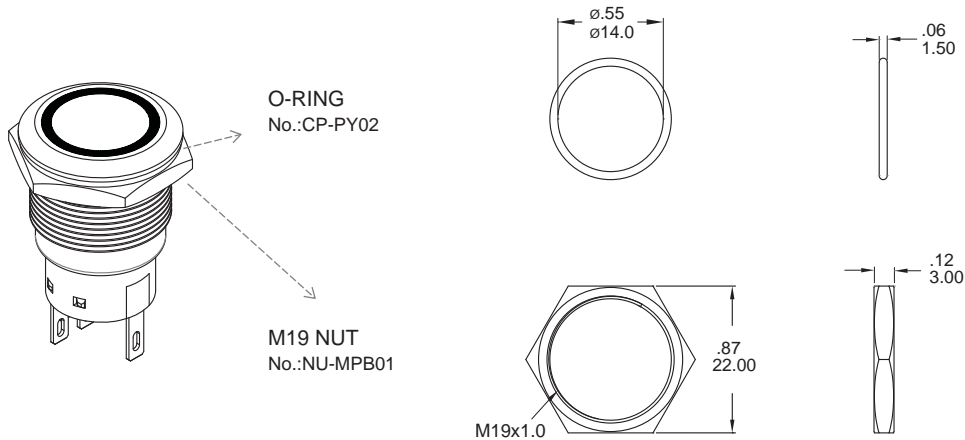
P Light Type

PANEL MOUNTING

Max.Panel thickness: 10.0mm[.39]



ASSEMBLED VIEW



O-RING INSTALLATION

Proposal	In front of the panel	Behind the panel
Installation Diagram		

MPB19 Pushbutton Switches