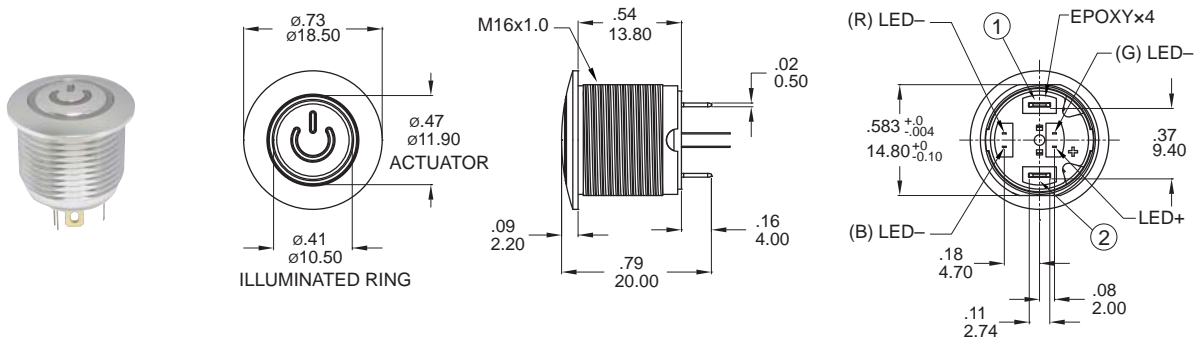


MPB16 Series

16mm Metal Pushbutton Switches

DIMENSION

P Power logo

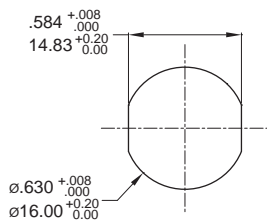


Part No. Shown : MPB16-CARP-RGB-JR-0V

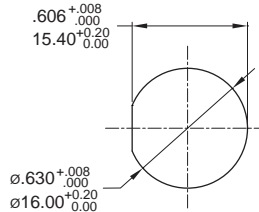
PANEL CUTOUT / HARDWARE

PANEL CUTOUT

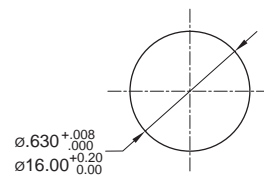
CA/CB/A1 Type



A3 Type

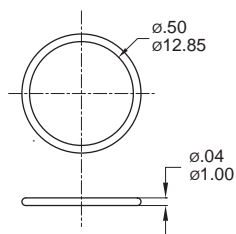


A2 Type

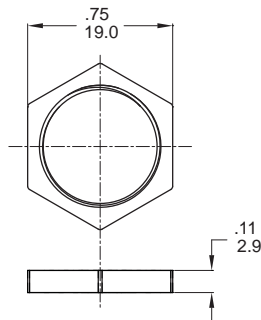


HARDWARE

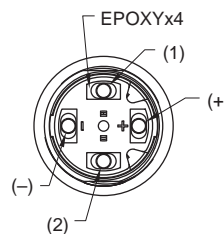
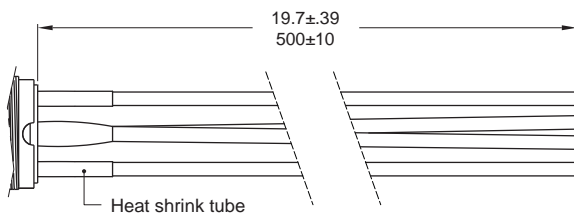
O-RING



M16 NUT



T1 ※Wire=Multi-wire lead AWG20,section 0.6mm²,UL approved

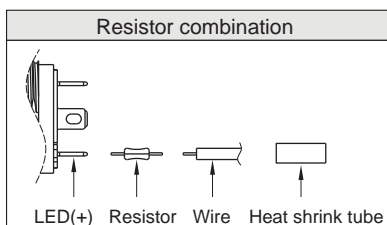


Non-LED

DESCRIPTION	WIRE COLOR
TERMINAL 1	BLACK
TERMINAL 2	BLACK

With LED

DESCRIPTION	WIRE COLOR
TERMINAL 1	BLACK
TERMINAL 2	BLACK
LED+	RED
LED-	GREEN



MPB16 Pushbutton Switches